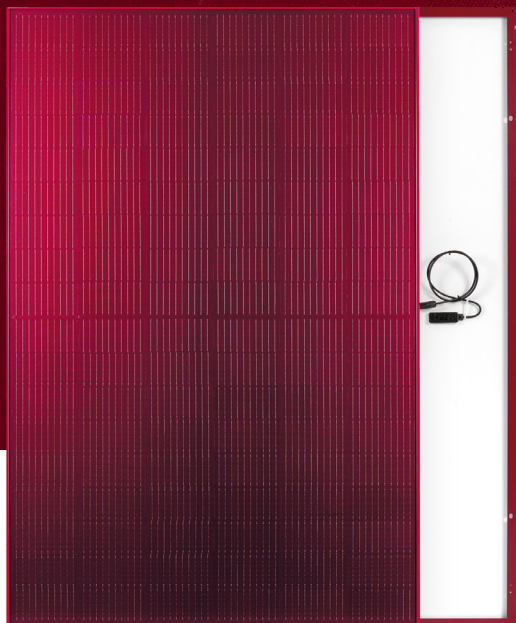


Silk[®] Nova Red



370 W n-type

Maximum power

Technology inside

KEY BENEFITS AND FEATURES



Power **370 Watt**



108 M10 **n-type** half-cut cells



Red colored glass and frame for special architectural requirements (similar to RAL 3005)*



Coloured glass for a **consistent appearance over time**



Perfect for traditional **roofs with red tiles** and historical areas



1722 x 1134 x 30 mm

Performance guarantee

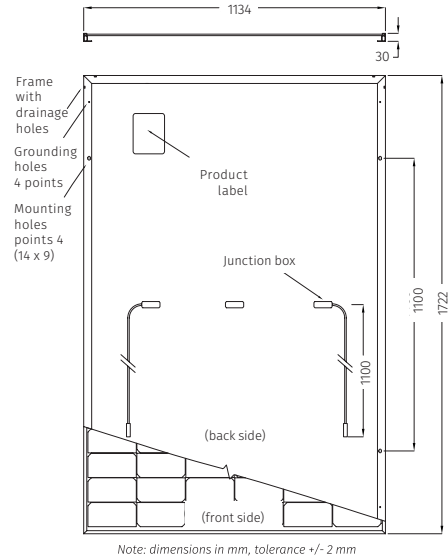
- **25-years** performance warranty with max power decrease from 2nd year **0.4%/year**
- **99%** at the end of first year
- **91.4%** at the end of 20th year
- **89.4%** at the end of 25th year

Product guarantees

- **15-year** product warranty
- Third-party product **liability** insurance
- All FuturaSun's modules are designed and guaranteed by the **Italian** headquarters

Mechanical Specifications

Dimensions	1722 x 1134 x 30 mm
Weight	20.8 kg
Glass	Red, High transmission, Low iron, Tempered, ARC, Thickness 3.2 mm
Cells	108 monocrystalline half-cut n-type cells 182 x 91 mm
Frame	Varnished anodized aluminium frame with mounting and drainage holes
Junction boxes	Certified according to IEC 62790, IP 68 approved, 3 bypass diodes
Cables	Solar cable 4mm ² , length 1100 mm or customized with connectors type Zhejiang Jiaming JM608
Backsheet	Composite Multilayer film - white on the back
Maximum reverse current (Ir)	25 A
Maximum system voltage	1500 V
Mechanical load (snow)	Design load: +1600 Pa, (+2400 Pa including safety factor 1.5)
Mechanical load (wind)	Design load: -1600 Pa, (-2400 Pa including safety factor 1.5)



Electrical data - STC*

FU370MV Silk Nova Red

Sorting tolerance	W	0~+5
Module power (Pmax)	W	370
Open circuit voltage (Voc)	V	38.94
Short circuit current (Isc)	A	11.97
Maximum power voltage (Vmpp)	V	31.57
Maximum power current (Impp)	A	11.72
Module efficiency	%	18.97

Electrical data - NOCT**

FU370MV Silk Nova Red

Module power (Pmax)	W	278
Open circuit voltage (Voc)	V	36.67
Short circuit current (Isc)	A	9.65
Maximum power voltage (Vmpp)	V	30.17
Maximum power current (Impp)	A	9.22

Temperature ratings

Certifications

Temperature coefficient Isc	%/°C	0.045
Temperature coefficient Voc	%/°C	-0.25
Temperature coefficient Pmax	%/°C	-0.29
NOCT**	°C	45
Operating temperature	°C	from -40 to +85
Module (T98) max	°C	70

Factory	ISO 9001 - 14001 - 45001
Product	IEC 61215, IEC 61730, Fire ratig Class C

Packaging

Quantity / Pallet	36 pcs
Container 40' HC	936 pcs / 26 pallets

The information included in this module datasheet is subject to change without notice and is provided for informational purposes only. No contractual rights are established or should be inferred because of user's reliance on the information contained in this module datasheet. Please refer to the appropriate module user guide and module product specification document for more detailed technical information regarding module performance, installation and use.

*Standard Test Conditions STC: 1000 W/m² - AM 1.5 - 25 °C - tolerance: Pmax (±3%), Voc (±4%), Isc (±5%)
**Nominal Operating Cell Temperature NOCT: 800 W/m² - T=45 °C - AM 1.5
Product Made in P.R.C.
AUS_01